

INDIGO COMBO BETA



eaglelightingaustralia
'Member of the Fagerhult Group'

INTRODUCTION



MADE IN AUSTRALIA

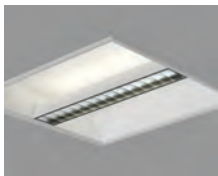
We are providing specifiers and designers with the very best lighting solutions made in our new state-of-the-art production facility in Melbourne. Through our engineering team, we have the ability to custom design luminaires to suit your project specific requirements.

The ability to control the whole manufacturing process, allows for better quality assurances, better customisation and of course better production times.



GLARE-FREE LIGHTING

The entire Indigo range is finished in a paint that gives the luminaire a fine structure surface. The structured finish offers a lit effect in the secondary reflector that is both soft and comfortable. The diffusion provided by the structured surface means the light is distributed more evenly.



BRIGHT AURA

Indigo is a luminaire system, which with the help of large scale secondary reflectors, creates rooms with bright and comfortable moods.

The wing shape of the reflector gives the light direction and vitality.

The indirect portion of the light increases the lighting comfort.



SOFT TRANSITIONS

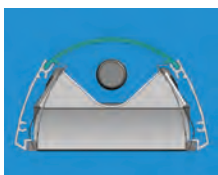
The design of the SoftFrame means that the luminaire has a soft transition at the intersection between the suspended ceiling and secondary reflector.



LOUVRE

The Beta louvre provides maximum efficiency and controlled light distribution.

The unique curved cross blades eliminates the GT stripe effect seen commonly in most louvres.



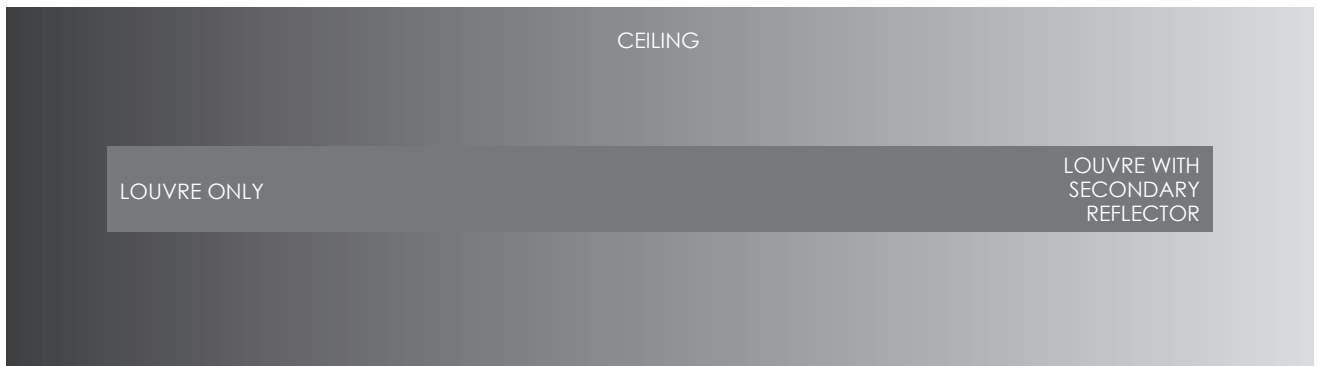
LINED DIFFUSER

The Indigo's unique lined diffuser maximises the fittings efficiency by acting as a heat chamber for the T5 lamp, ensuring it reaches the optimum output at 35°.

A balanced distribution and maximum illuminance of 1500cd/m² on the secondary reflector is assured through the lined diffuser's light control function.

The internally reeded structure of the lined diffuser ensures the lamp remains free from dust and allows for easy wipe down.

GLARE - FREE LIGHTING



White's illusion is an optical illusion illustrating the fact that the same target luminance can elicit different perceptions of brightness in different contexts. Note, that although the gray rectangle is all of equal luminance, the left end seen in context with the dark background appears brighter than the end seen in the context with the bright background.

In context to today's office environments, the use of low-brightness louvres into unlit ceilings creates a similar scenario to what we see on the left hand side. If we think of our line as the louvre, this demonstrates how the high contrast between the ceiling and the louvre can lead to excessive brightness and visual discomfort. This unwanted result is a known cause of low productivity and even health issues for the occupants of the space.



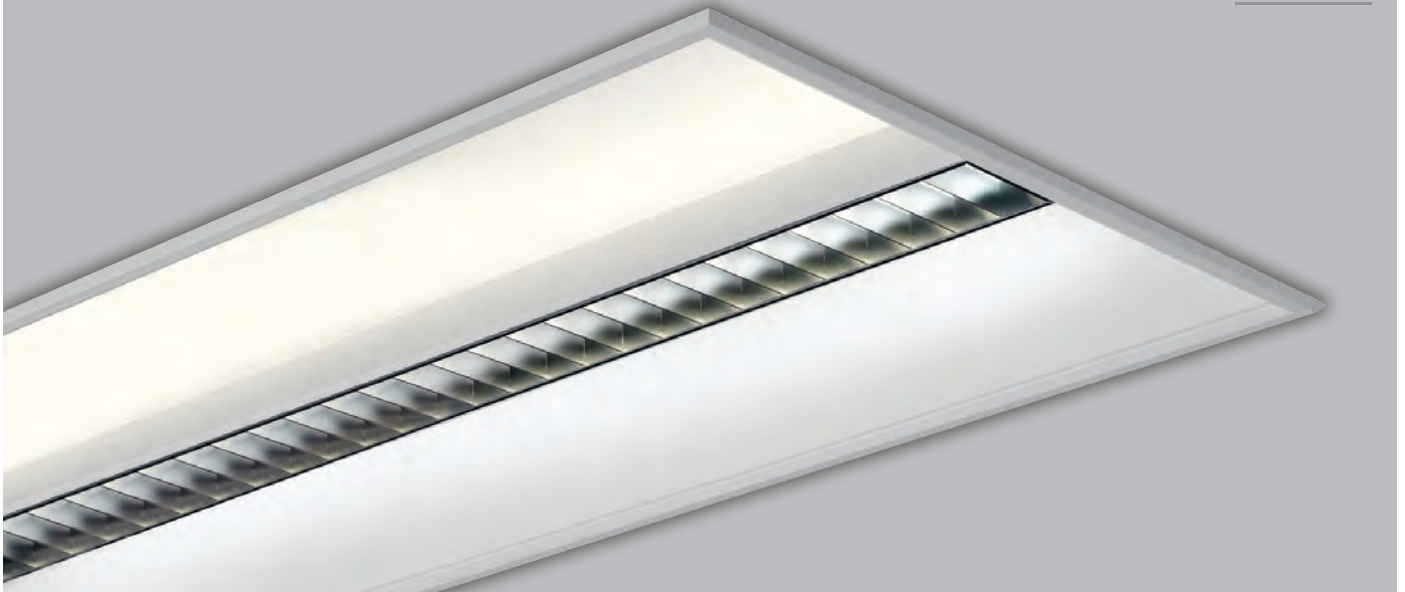
MULTIFIVE BASIC BETA G2



INDIGO COMBO BETA G2

The solution lies in the use of the Indigo Combo. Whilst still providing all the efficiencies we expect from a high performance louvre we are able to combine an indirect component to the distribution. This is best represented by what we see at the right end of the line. The louvre no longer appears bright and the visual comfort is increased dramatically. Also notice 'the ceiling' and how the brightness helps eliminate the perception of gloom.

INDIGO COMBO BETA 1X25W

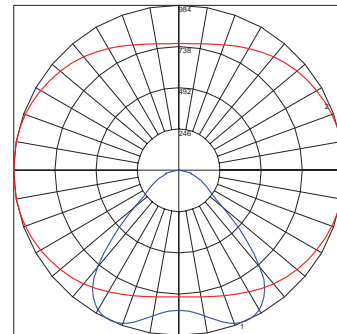


product information

polar drawing

Fagerhult Indigo Combo Beta 1x25W

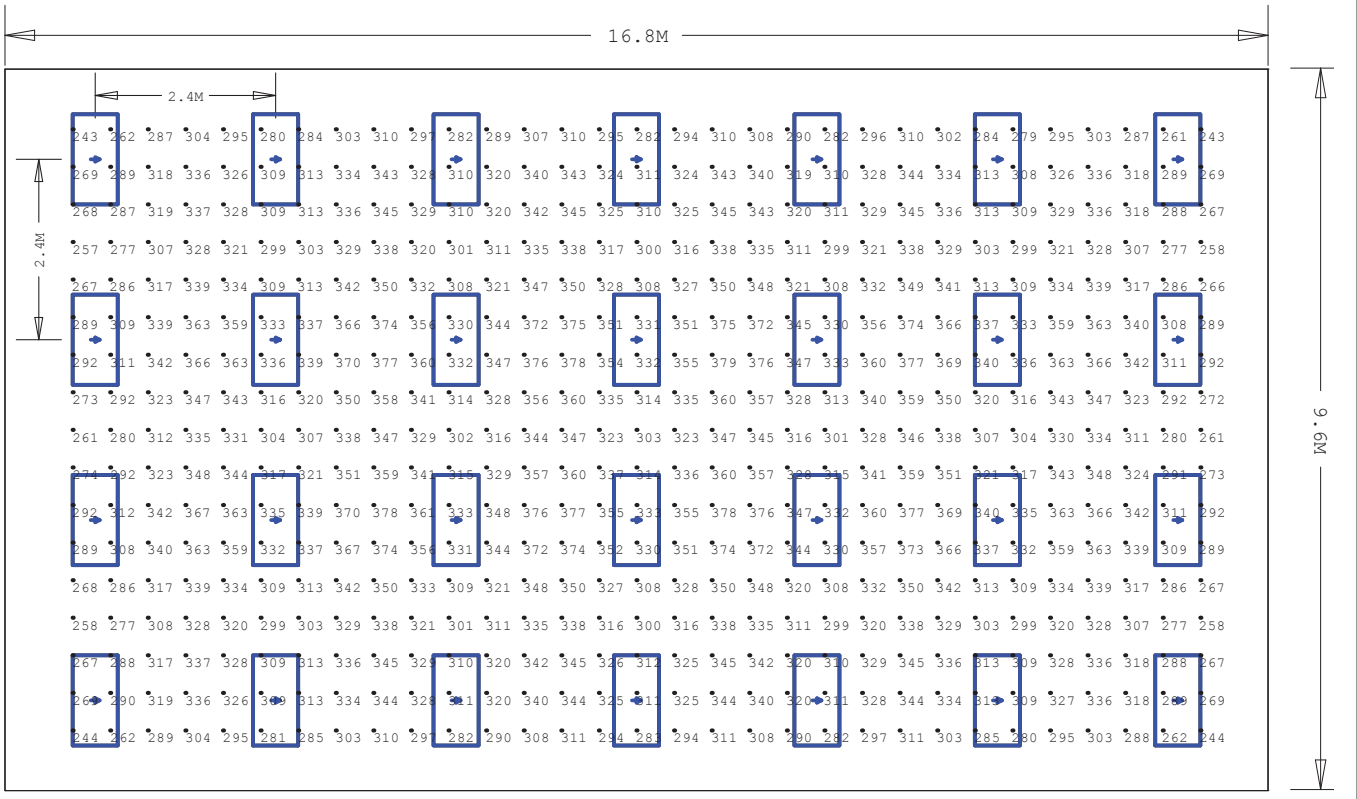
Article No.	24871
Luminaire Luminous Flux	2450 lm
System Luminaire Wattage	27W
Size	1200 x 600



calculation summary

Height of Room: 2.7m	Work Plane: 0.72m	Reflection Properties: 80/50/20		
APPROXIMATE W/m² = 4.68 = 1.44 W/m²/100 lux		Spacing : 2.4 x 2.4m		
Maximum Glare Index : 16		0% Points over 400 lux		BCA : 4.68 W/m ²
Maintenance Factor	Eav [lx]	E_{max} [lx]	E_{min} [lx]	E_{min}/Eav
.8mf	323.34	379	243	0.75

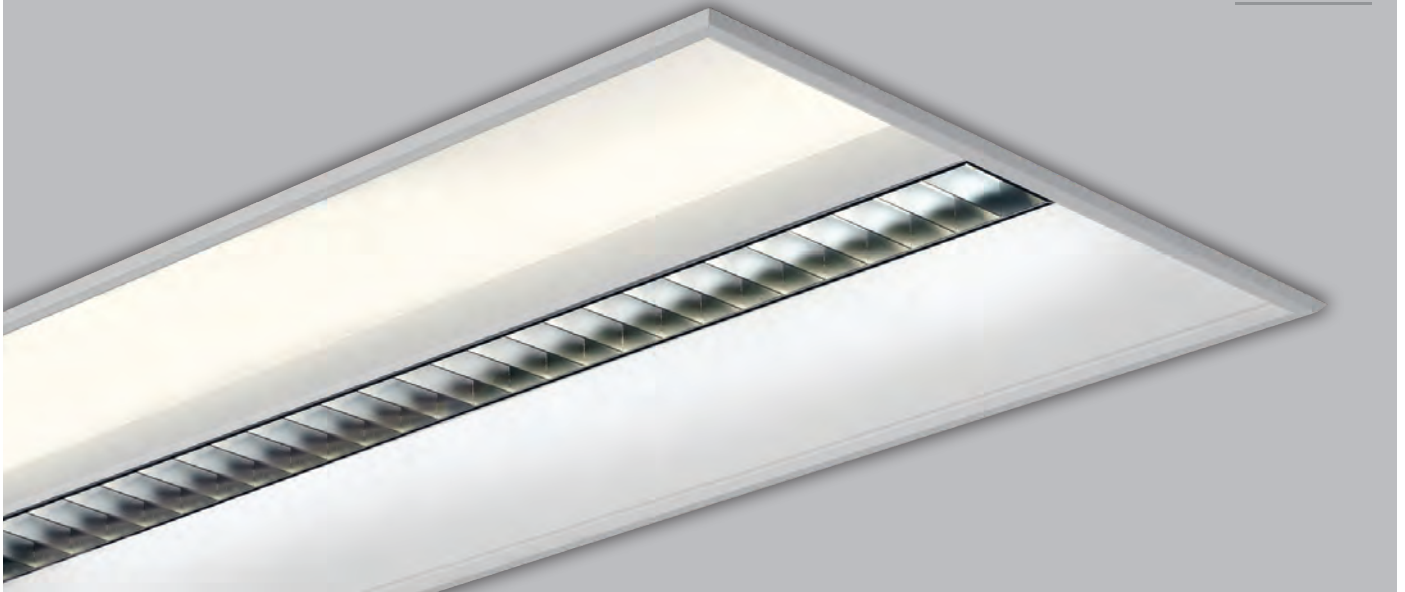
AGi32 lighting calculation



3d render



INDIGO COMBO BETA 1X28W

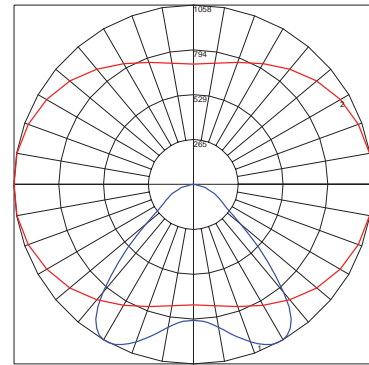


product information

polar drawing

Fagerhult Indigo Combo Beta 1x28W

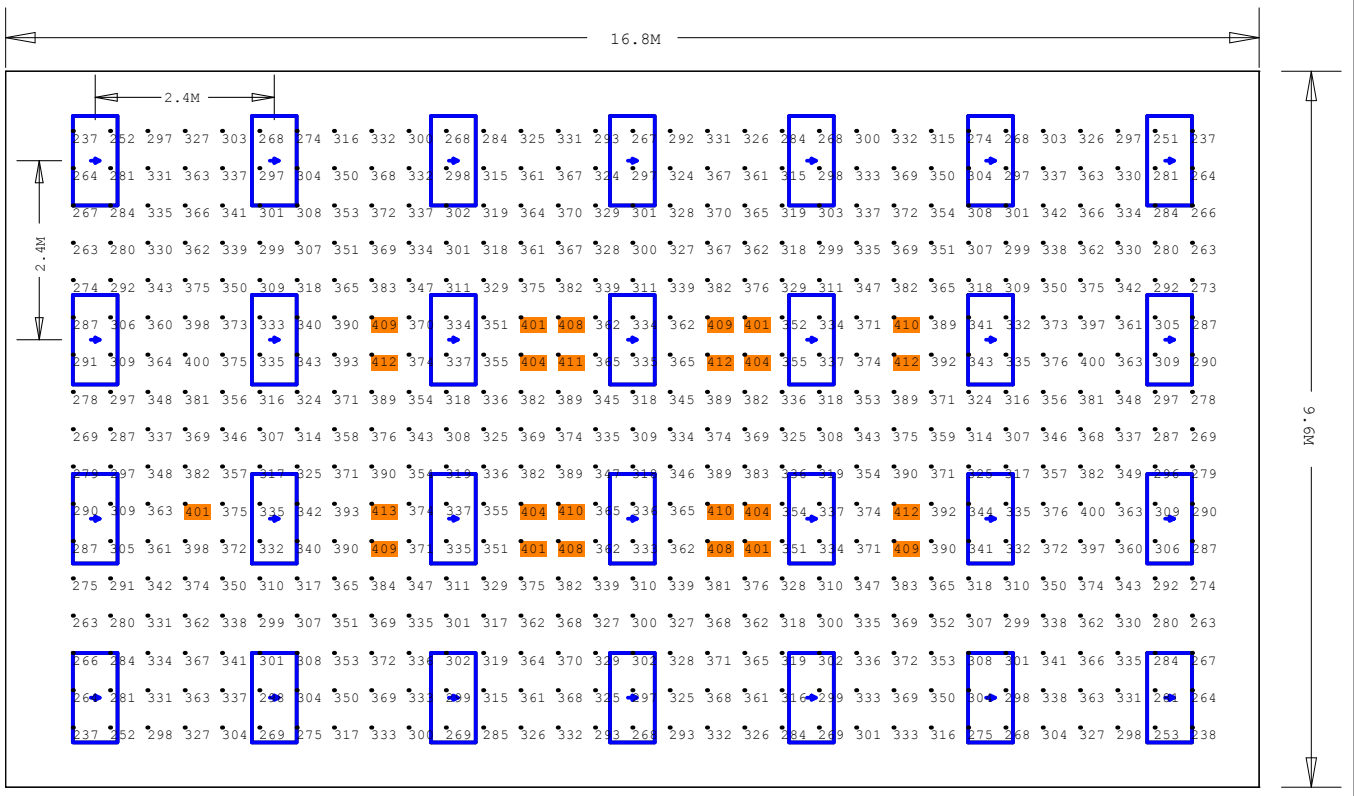
Article No.	24871
Luminaire Luminous Flux	2600 lm
System Luminaire Wattage	31W
Size	1200 x 600



calculation summary

Height of Room: 2.7m	Work Plane: 0.72m	Reflection Properties: 80/50/20		
APPROXIMATE W/m² = 5.38 = 1.60 W/m²/100 lux		Spacing : 2.4 x 2.4m		
Maximum Glare Index : 16		4.7% Points over 400 lux		BCA : 5.38 W/m ²
Maintenance Factor	Eav [lx]	E_{max} [lx]	E_{min} [lx]	E_{min}/Eav
.8mf	335.09	413	237	0.71

AGi32 lighting calculation



3d render



eaglelightingaustralia
'Member of the Fagerhult Group'

www.eaglelighting.com.au

MELBOURNE

Eagle Lighting VIC
17-19 Jets Court, Melbourne Airport VIC 3045
P. 03 9344 7444 F. 03 9344 7433

SYDNEY

Eagle Lighting NSW
Unit 4, 21 Mars Road, Lane Cove NSW 2066
P. 02 9420 5799 F. 02 9420 5988

BRISBANE

Eagle Lighting QLD
53 Caswell Street, East Brisbane QLD 4169
P. 07 3891 0744 F. 07 3891 0755

SOUTH AUSTRALIA

SA Lighting
11 Union Street, Stepney SA 5069
P. 08 8362 7544 F. 08 8362 7599

TASMANIA

Southern Lighting & Distribution
34 Federal Street, North Hobart TAS 7000
P. 03 6231 5599 F. 03 6231 5211

WESTERN AUSTRALIA

H.I. Lighting Pty Ltd
111 Broadway, Bassendean WA 6054
P. 08 9377 1322 F. 08 9377 1761

ACT

Lite-tech Agencies
1 Lithgow Street, Fyshwick ACT 2609
P. 02 6280 5516 F. 02 6280 8635

NEW ZEALAND

Flare Lighting
Unit 1/44 Curries Road, Hillsborough
Canterbury NZ 8022
P. +64 3 977 2034 F. +64 3 977 2048